



Beth Lee

October 6, 1942 - July 23, 2015

Services for Beth Lee, 72, of Lubbock will be at 10:00 a.m., Monday, July 27, 2015 at Westminster Presbyterian Church. Burial will follow at the City of Lubbock Cemetery. Her family will receive friends from 2-3 p.m., Sunday at Sanders Funeral Home.

Mrs. Lee passed away on July 23, 2015.

Elizabeth Anne was born October 6, 1942 in North Platte, NE to Keith and Frances Sackett. She graduated Seward High School in 1960 and attended Macalester College until withdrawing to work at the Nebraska Air National Guard. She worked at Finley Engineering College. She moved to Lubbock in 1978, was employed by Texas Instruments, Women's Protective Services and then for Gwen Jordan, DDS. Beth married her high school sweetheart Arthur Eugene Lee in 1999. She was a member of Westminster Presbyterian Church.

Preceded in death by her father, Rev. Keith Sackett; mother, Frances Sackett and grandchild, Hannah Short.

Loved ones include her husband, Art Lee; son, Keith Anderson and wife, Regina; daughter, Natalie Cisneros and husband, Rudy; step sons, Ben Vollmayr-Lee, Gene Lee and Tom Lee; Grandchildren, Haley, Will, Rebekah, Kayla, Chase, Miriam, Martin, Cassie and Corey; great grandchild, Isabella. Memorials are suggested to Teeth Savers International, an organization that Beth was involved with and passionate about. She traveled to Africa with Teeth Savers in 2010.

Cemetery Details

City of Lubbock Cemetery

2011 East 31st Street
Lubbock, TX 79404

Previous Events

Visitation

JUL **26.** 2:00 PM - 3:00 PM (CT)

Sanders Funeral Home
1420 Main Street
Lubbock, TX 79401
(806) 763-6433
director@sandersfuneralhome.com
<https://www.sandersfuneralhome.com>

Service

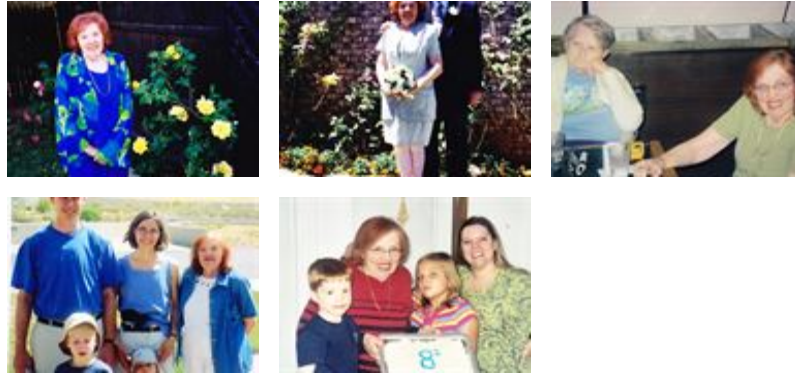
JUL **27.** 10:00 AM (CT)

Westminister Presbyterian Church
3321 33rd Street
LLubbock, TX 70410

Tribute Wall



“ 36 files added to the album Life Tributes



Sanders Funeral Home - July 27, 2015 at 08:30 AM

FG

“ *I knew Beth's parents and have known her over the years ever since she became a member at Westminster Presbyterian Church. In later years, we regularly attended the 12:12 Tuesday noon Bible Class together at the Church. She was brave as she faced many health issues, but faithful in her attendance in Worship and Bible study even when it was so difficult for her to walk or breathe. Her life was dedicated to God and the mission of the church. She will be missed among us. Sincere condolences are expressed to her family in their sorrow.*

Florence Gum - July 25, 2015 at 02:41 PM